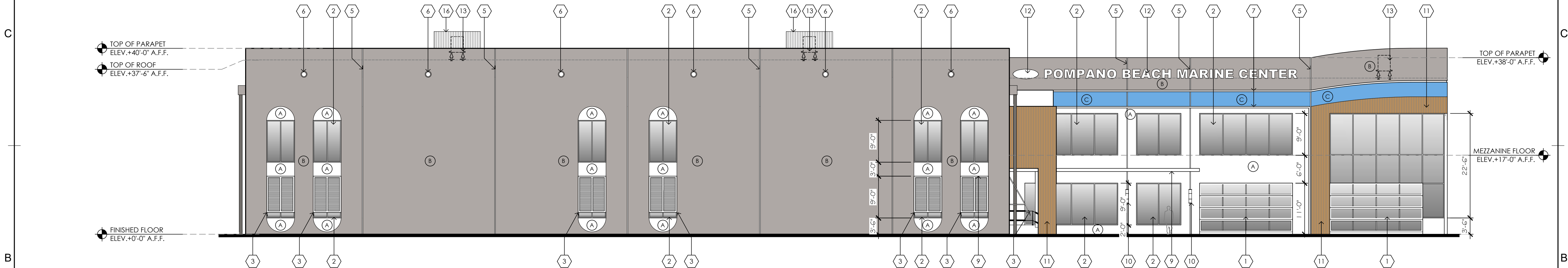


D1 WEST ELEVATION  
3/32" = 1'-0"



B1 SOUTH ELEVATION  
3/32" = 1'-0"

A1 NOT USED

PROPOSED SITE IMPROVEMENTS FOR:  
POMPAÑO BEACH MARINE CENTER

701 FEDERAL HIGHWAY POMPAÑO BEACH, FL 33062  
**barranco gonzalez** • architecture • planning • interior design  
Fort Lauderdale, FL 33316 phone: (954) 961-7675 fax: (954) 961-7685 mail: bg@bgaarchitecture.com  
1915 southeast 4th avenue consultant  
lb # 26001020 aa # 26001030

DESIGNED  
JPB

DRAWN  
JO/SRS

CHECKED  
JPB

DATE:  
06.27.2025

COMM:  
231120

this document or parts thereof may not  
be reproduced in any form without  
permission copyrighted material ©

REVISIONS

EXTERIOR ELEVATIONS

SITE PLAN APPROVAL

A-202